



REDWOOD COAST
MOUNTAIN BIKE ASSOCIATION

Stage 1:

Starts on Half Rack at the top of Cobbler, finishes at the bottom of S.G.

Stage 2:

Starts at the top of Half Rack of Cobbler, veers off Half Rack into a new section. Crosses the 5100 and enters Wood Rat. Alternative Finish for Sport/Beg Categories

Stage 3:

Cobbler top to bottom

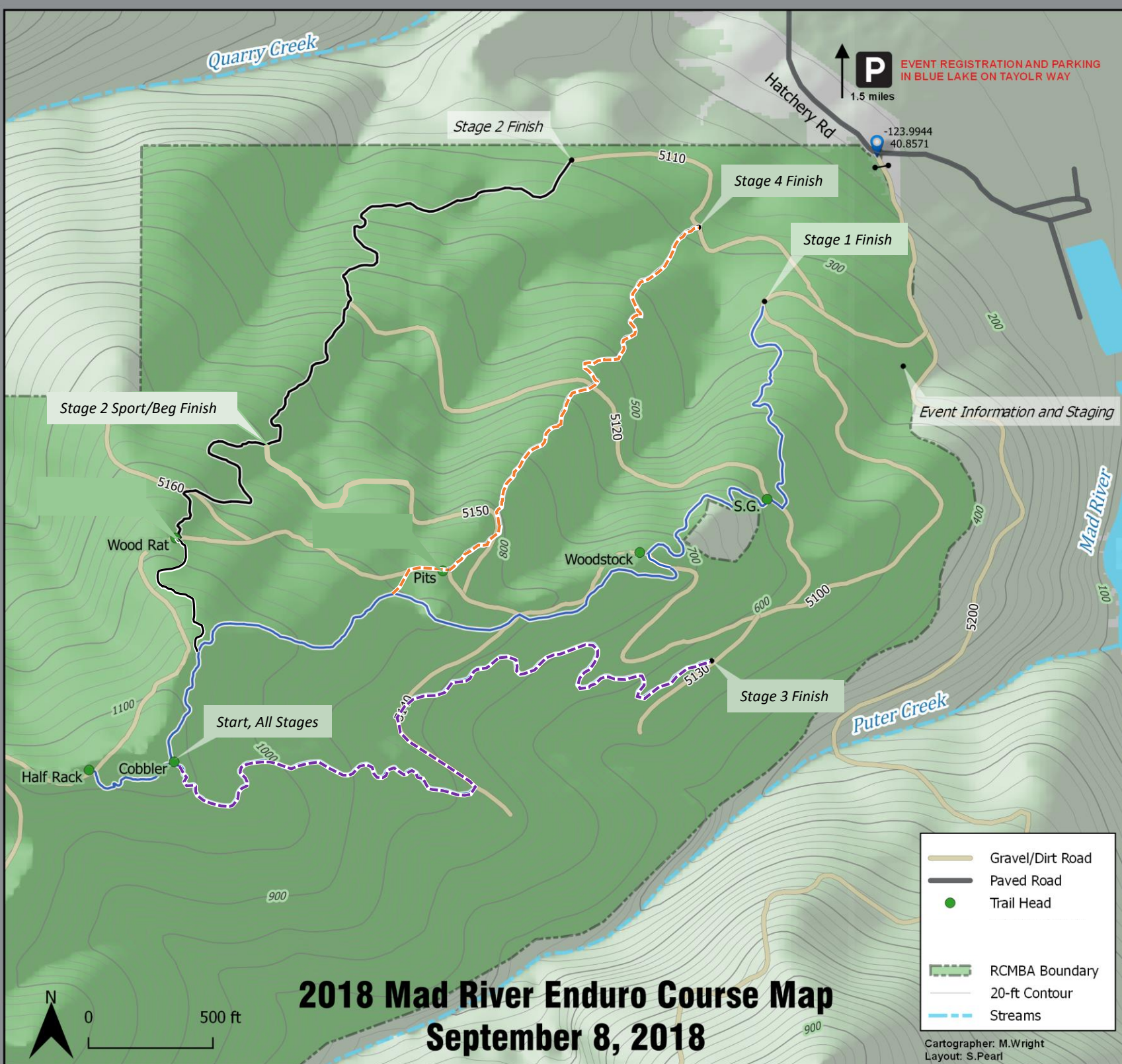
Stage 4:

Starts on Half Rack at the top of Cobbler, veers off Half Rack, crosses the 5100 and enters Pits.

These trails are steep and raw in nature. Full faces required for this event. For inquiries and race registration, visit:
www.humboldtenduro.com

For RCMA information and trail updates, visit:
www.redwoodcoastmtb.org

Special Thanks to:



	Gravel/Dirt Road
	Paved Road
	Trail Head
	RCMA Boundary
	20-ft Contour
	Streams

Cartographer: M.Wright
Layout: S.Pearl